

LCB Differentiation

E-SM and E-ST

The LCB on the E-SM and the E-ST visually look identical (Fig. 1) but they have different part numbers. Each LCB has specific software which is why they are NOT interchangeable. Make sure to use the correct part number for the correct machine. Double check the part number before installing a new LCB.

- **711-3363** = E-SM
- **711-3162** = E-ST

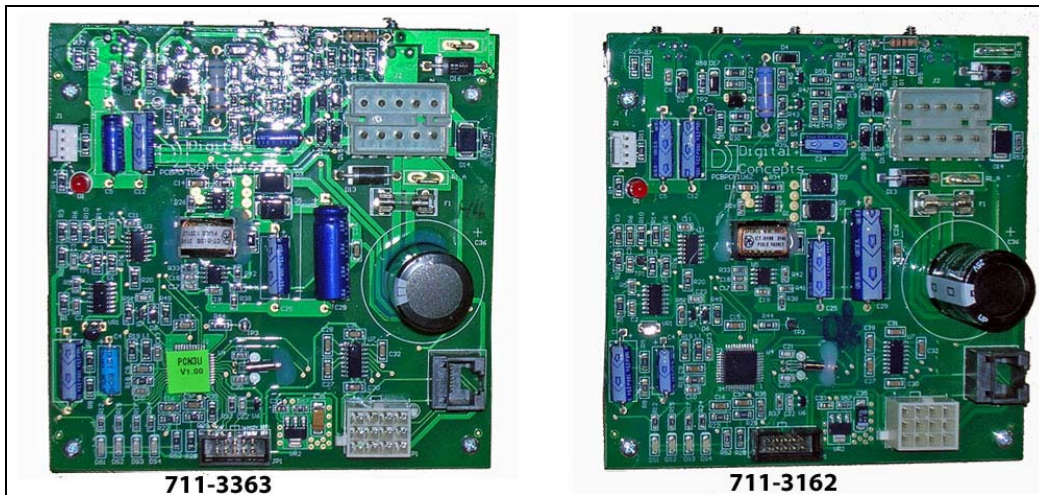


Fig. 1

There is a sticker on the bottom part of the LCB that displays the part number (Fig. 2) to distinguish which is the correct LCB.

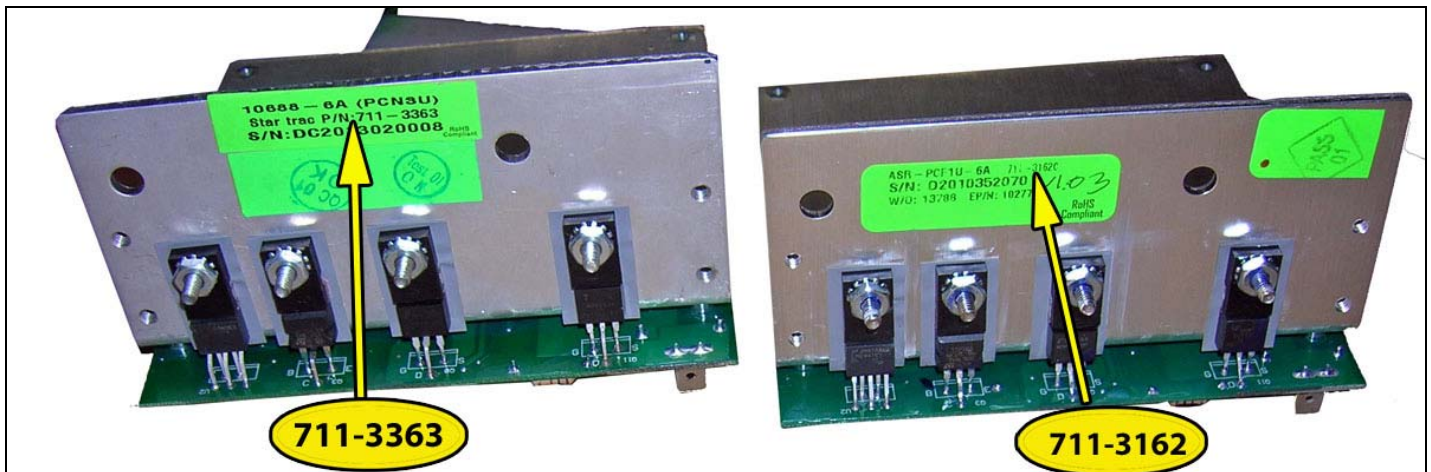


Fig. 2